



GRAPHITE GTC

Install Notes

Contents

Files to Download	3
Supporting Tools	3
Install Process	4
Graphite Studio Registration	5
Windows 10 Pro / Enterprise - Notes	7
Windows Server - Notes	11

Files to Download

Graphite Studio System Requirements.pdf

- Graphite Studio System Requirements

Graphite Studio Install Notes.pdf

- Graphite Studio Install Notes (this document)

GraphiteSetup_X.X.X.X.exe

- Graphite Studio Installer
- Uninstall previous version via Control Panel

GraphiteGTCCoreInstaller.exe

- Install after Graphite Studio has been installed
- Sets up Graphite GTC Core Library Content
- Sets up Local Library Store

Supporting Tools

VSIsoShell.exe

- Visual Studio 2010 (Shell) Installer

vs_isoshell.exe

- Visual Studio 2013 (Shell) Installer

WebDeploy_x64_en-US.msi

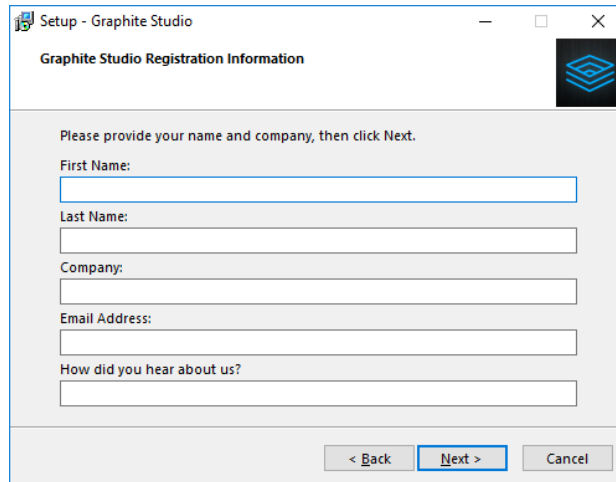
- Web Deploy Installer

AspNetMVC4Setup.exe

- ASP.NET MVC 4 for Visual Studio 2010 SP1 and Visual Web Developer 2010 SP1

Install Process

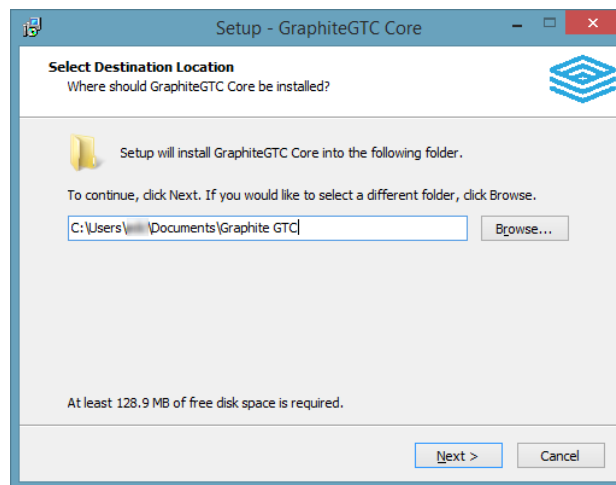
1. Run **GraphiteSetup_X.X.X.X.exe** – The Graphite Studio Installer
 - a. Enter Graphite Studio Registration Information - Please provide **valid information** since a activation code will be emailed to that account



The screenshot shows a Windows dialog box titled "Setup - Graphite Studio" with the subtitle "Graphite Studio Registration Information". The dialog contains a message: "Please provide your name and company, then click Next." Below this are five text input fields labeled "First Name:", "Last Name:", "Company:", "Email Address:", and "How did you hear about us?". At the bottom right, there are three buttons: "< Back", "Next >", and "Cancel".

- b. Continue with installation process and restart machine (if prompted)

2. Run **GraphiteGTCCoreInstaller.exe** – The Graphite GTC Core Content Installer
 - a. Make sure the configuration entries are updated if the folder is changed to another location.

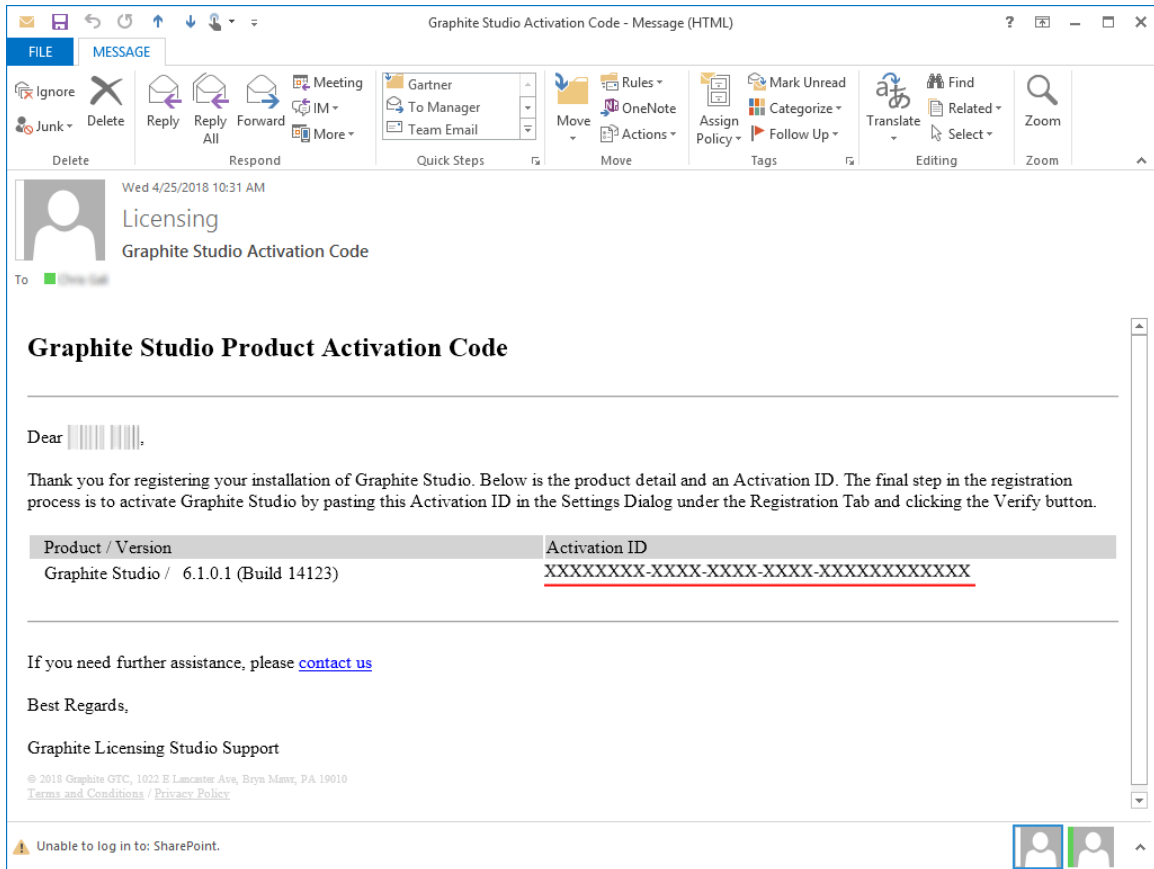


The screenshot shows a Windows dialog box titled "Setup - GraphiteGTC Core" with the subtitle "Select Destination Location". The dialog contains the text: "Where should GraphiteGTC Core be installed?". Below this is a folder icon and the text: "Setup will install GraphiteGTC Core into the following folder." Further down, it says: "To continue, click Next. If you would like to select a different folder, click Browse." A text input field shows the path "C:\Users\... \Documents\Graphite GTC" and a "Browse..." button is to its right. At the bottom, it states: "At least 128.9 MB of free disk space is required." and has "Next >" and "Cancel" buttons.

Graphite Studio Registration

Graphite Studio provides a simple registration process to enable users to build and deploy applications without interruption.

Once Graphite Studio has been successfully installed an email will be delivered with an Activation ID.

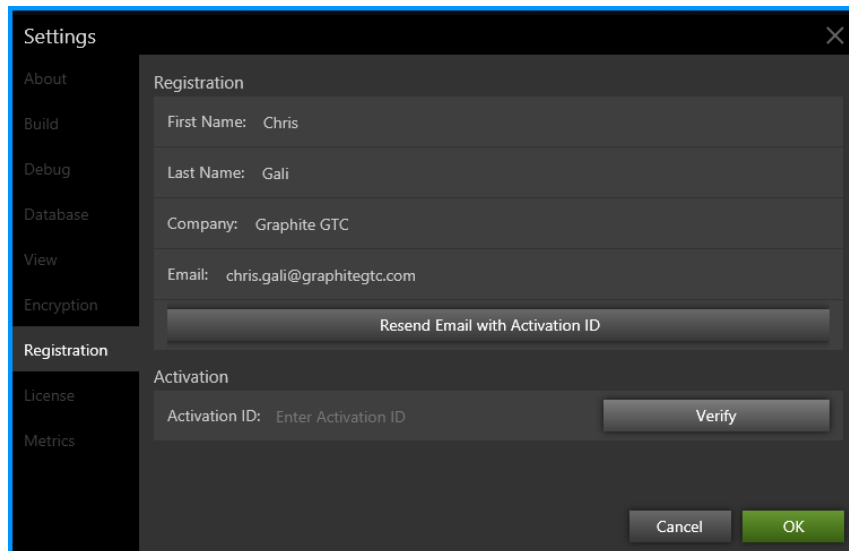


This Activation ID should be entered in the Graphite Studio Settings dialog to properly register Graphite Studio.

Graphite Studio communicates with Graphite GTC's Licensing Server to register and validate Graphite Studio. Please ensure that there is a valid internet connection and the firewall does not prevent any communication with **licensing.graphitegtc.com**.

Please follow the directions provided below.

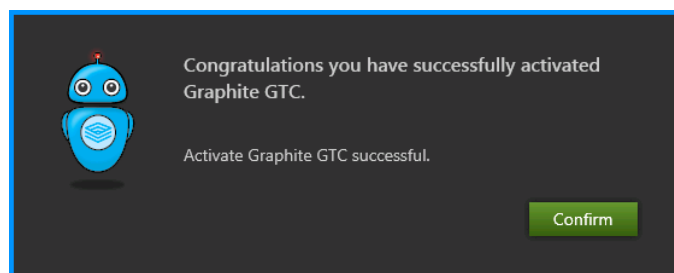
Run Graphite Studio and open a Project or create a new Project. Once in the Project Home Screen use the **side bar** menu to open the **Settings** dialog. In the Settings dialog choose the **Registration** tab.



The Registration tab shows the registration information provided during the installation process.

If any of the registration information has changed a new Activation ID can be generated using the **Resend Email with Activation ID**.

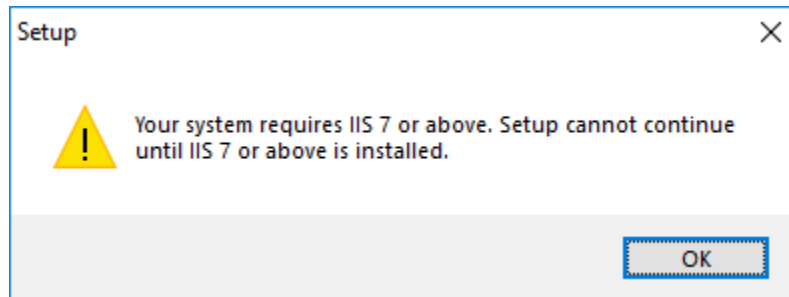
Enter Activation ID in the space provided and push **Verify**.



Registration of Graphite Studio is now complete!

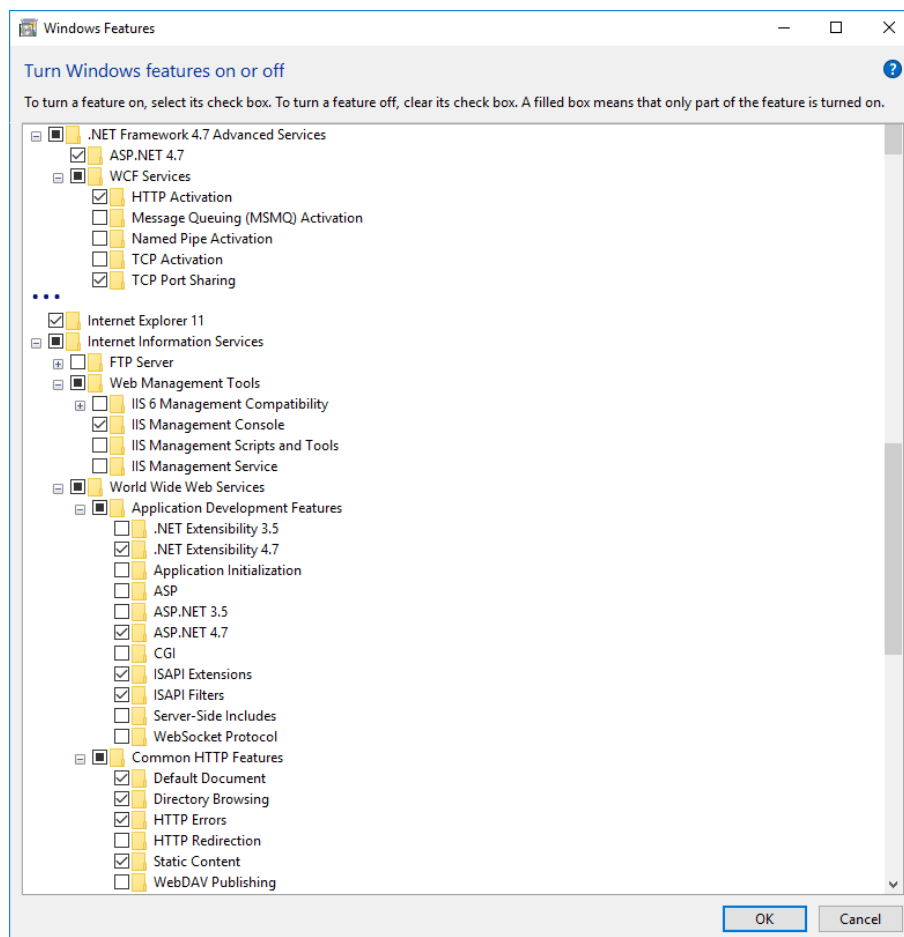
Windows 10 Pro / Enterprise - Notes

IIS 7 or above



If the above error appears during installation do the following:

1. Search for and click “Turn Windows features on or off”
2. In Turn Windows features on or off
3. Enable the features as show in figure below.



4. Run **Graphite Studio** Installer

Visual Studio 2010 Shell

When building a Graphite Studio Implementation Project if the following **build** error occurs.

The imported project "C:\Program Files (x86)\MSBuild\Microsoft\VisualStudio\v11.0\WebApplications\Microsoft.WebApplication.targets" was not found. Confirm that the path in the <Import> declaration is correct, and that the file exists on disk.

1. Install VSIsShell
2. Install vs_isoshell

These installers will install the Visual Studio Shell for 2010 and 2013 which are needed if Visual Studio is not installed on the developer's computer.

Please run Windows updates after installing both the Visual Studio shells.

Visual Studio 2015 or 2017 already installed

When building a Graphite Studio Implementation Project if the following **build** error occurs.

Web deployment task failed.(Remote agent (URL http://localhost/MSDEPLOYAGENTSERVICE) could not be contacted. Make sure the remote agent service is installed and started on the target computer.) Remote agent (URL http://localhost/MSDEPLOYAGENTSERVICE) could not be contacted. Make sure the remote agent service is installed and started on the target computer. An unsupported response was received. The response header 'MSDeploy.Response' was '' but 'v1' was expected.

1. Install WebDeploy_x64_en-US.msi

If **browsing** the built web application gives the following error.

Configuration Error

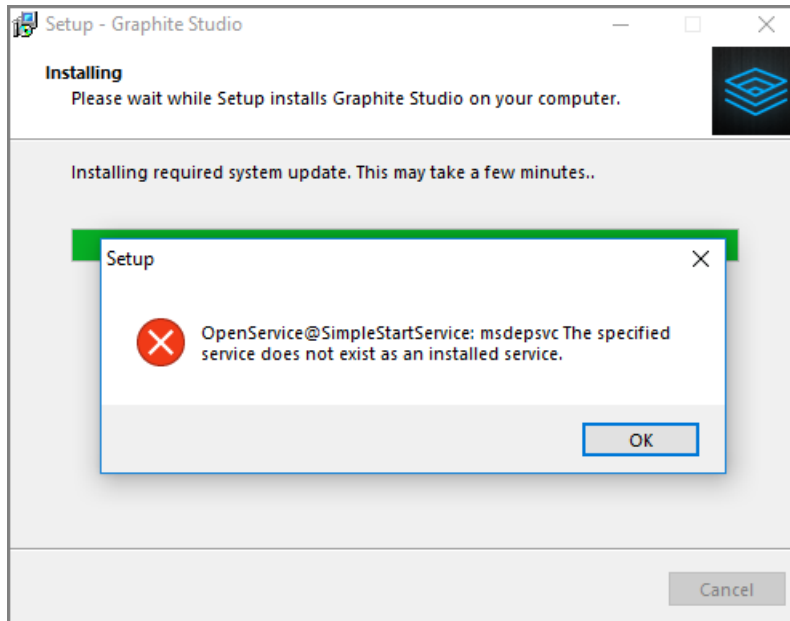
Description: An error occurred during the processing of a configuration file required to service this request. Please review the specific error details below and modify your configuration file appropriately.

Parser Error Message: Could not load file or assembly 'System.Web.Helpers, Version=2.0.0.0, Culture=neutral, PublicKeyToken=31bf3856ad364e35' or one of its dependencies. The system cannot find the file specified.

1. Install AspNetMVC4Setup.exe

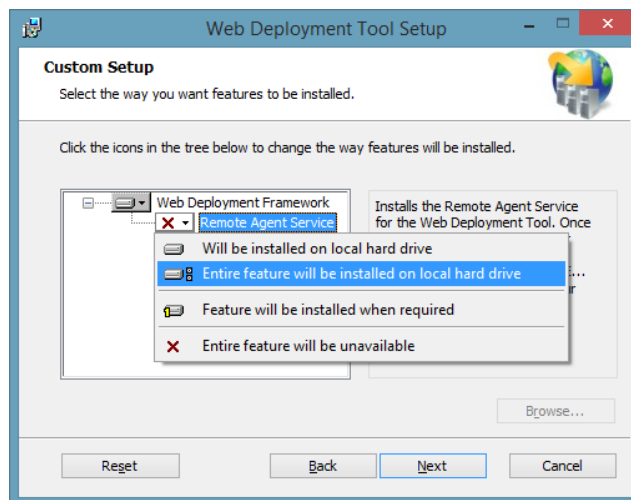
Web Deployment Agent Service not running

In some cases the during the Graphite Studio installation the following error is encountered.



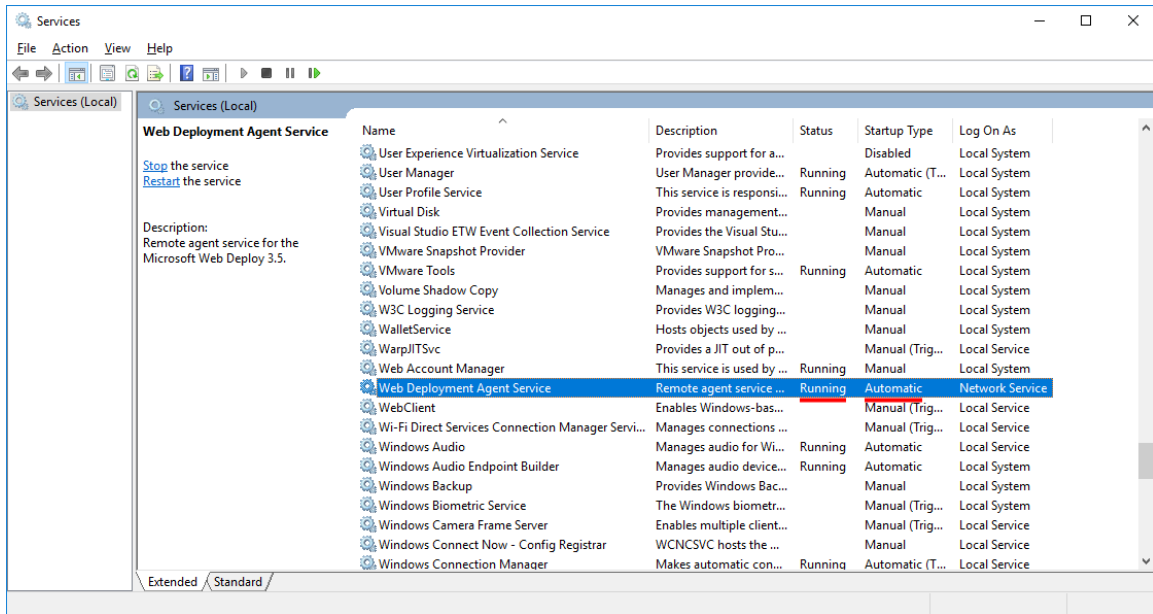
This error may occur due the fact that the Web Deployment Tool or the Web Deployment Tool's Remote Agent Service was not installed. If the Web Deployment Tool has been successfully installed then this error occurs due to the service not running.

When installing the **WebDeploy_x64_en-US.msi** make sure the Remote Agent Service is setup to be 'installed on local hard drive' as shown in the figure below.



Navigate to this dialog by choosing the Custom setup type when running the msi file.

The **Web Deployment Agent Service** should be started manually and marked for automatic start.



Windows Server - Notes

In some installations of Windows Server, the features that allow web applications are not enabled by default.

In these cases, please do the following:

1. Search for and click “Turn Windows features on or off”
2. In the Server Manager Dashboard click “Add roles and features”
3. Enable the roles and features as show in figure below.

